

High-Pinning Iridium-Manganese-Chromium (IrMnCr) Read Sensors for High Reliability & Stability

HITACHI
Inspire the Next

Randy Simmons, Director, Slider Fabrication Eng.
Ciaran Fox, Manager, Read Head Design
John Kotla, Manager, Slider Fabrication Ad Tech
Jinshan Li, Manager, Sensor Process Development Eng.

Introduction

To fuel the continued growth in areal density of hard drives, the physical dimensions of the read sensor have had to be significantly reduced to accommodate the smaller data bit size (see Figure 1). This dramatic reduction of the read sensor—more than 10X in 10 years—has significantly increased the susceptibility of the read head to magnetic and environmental stresses and led to increased propensity for failure. Concurrently, consumers are requiring increased reliability with every generation of hard drives for storage of their valuable data. To address the demand for increased capacity and highly reliable operation of the read sensor, Hitachi scientists developed a novel material and process for the manufacture of ultra-small read sensors. Use of a new read-head alloy—iridium-manganese-chromium (IrMnCr)—resulted in the storage industry’s most stable and reliable read-sensor technology.

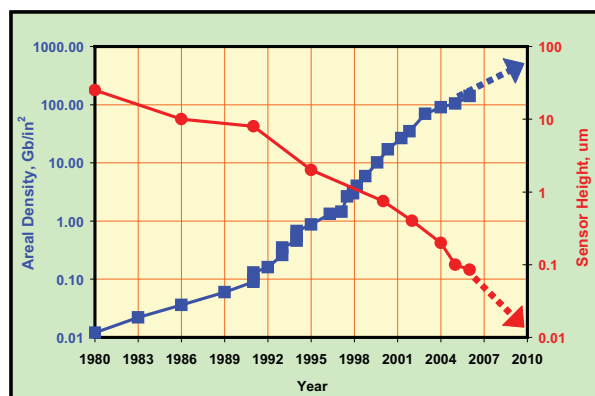


Figure 1: Areal density and sensor height vs time for longitudinal and perpendicular recording heads. Shorter read sensors have increased stress on the pinned layer and are more susceptible to environmental factors.

The IrMnCr alloy combination replaces the platinum-manganese (PtMn) alloy used in prior read-head generations. Hitachi added chromium to the combination to bring additional anti-corrosion properties to the read sensor. In combination with IrMnCr, Hitachi engineers incorporated an extremely thin layer of ruthenium in the structure to create a very high “pinning field” which affords increased stabilization of the read sensor.

Figure 2 is a schematic diagram of a typical multilayer giant magneto-resistive (GMR) head which is composed of a pinned layer, spacer layer, and free layer. In order to have stable, reliable operation of the sensor, the magnetic orientation of the pinned layer must be fixed or held in position. This requires the pinned layer orientation to be robust or resistant to mechanical, thermal, and external magnetic fields from the disk drive environment, independent of its physical size. The stronger the pinning field, the more stable the read sensor. Figure 3 illustrates the results achieved by Hitachi’s novel design and process, which provides not only a 2X increase in pinning field compared to previous sensors, but also a much more uniform pinning field.

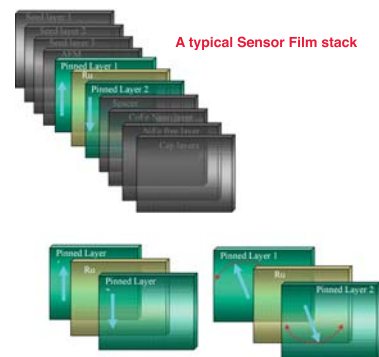


Figure 2: Schematic of a GMR read-sensor film stack. [Lower right drawing shows pinned layer rotation (instability) due to thermal, mechanical, and magnetic field stresses experienced in the hard disk drive environment.

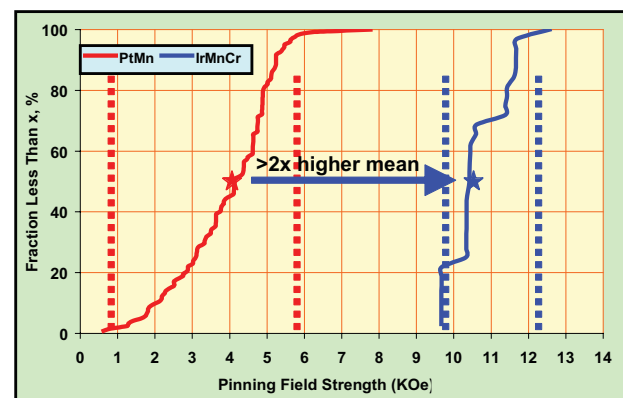
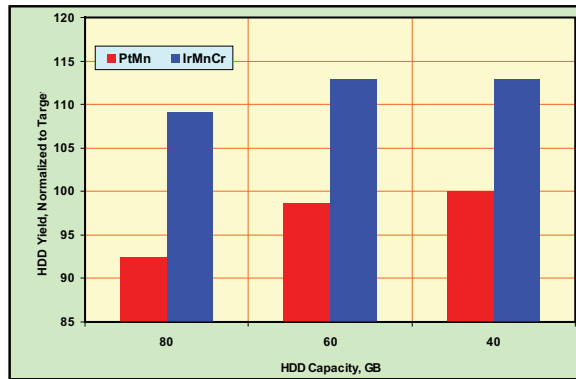
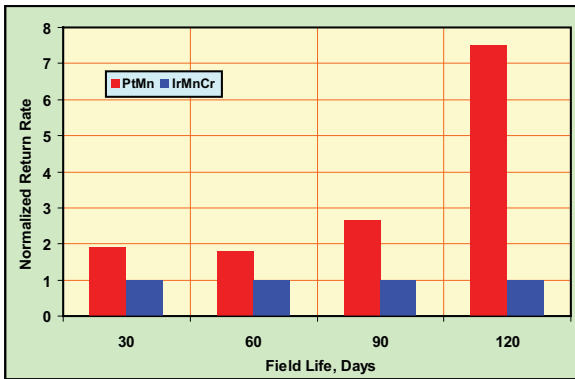


Figure 3: Pinning field distribution. The new IrMnCr sensor shows 2X higher pinning field compared to PtMn sensor and a significant advantage over nearest head competitor.

High-Pinning Iridium-Manganese-Chromium (IrMnCr) Read Sensors for High Reliability & Stability



Figures 4 and 5: Hard drive normalized field reliability and yield data for IrMnCr and PtMn read sensors. Significant improvements in hard drive field reliability (greater than 2X and increasing with time) and an increase in manufacturing yield of ~10% were obtained for all capacity models.

The unique combination of pinning field strength and uniformity results in substantially higher reliability and increased manufacturing yield. Figure 4 shows the greater than 2X improvement in field reliability for hard drives using the new IrMnCr read sensor, and Figure 5 illustrates the 10 percent increase in hard drive yield. Hitachi notebook PC customers have confirmed the robustness of the new read sensor design, and believe it offers a higher level of protection to their end-users' data.

The new IrMnCr sensor is completely extendable to future head designs such as tunneling magneto-resistance (TMR), and it provides confidence that Hitachi will be able to meet the demands for increased capacity and high reliability hard drives.

The development and conversion of our product lines to IrMnCr/Thin Ruthenium sensor structures is the result of a worldwide effort, involving many technologists and specialists in our Research, Ad Tech, Development, Manufacturing Engineering and Manufacturing operations. Our business is greatly indebted to all contributors for delivering this monumental technology to the HDD market place.

For a quick and entertaining look at a read-head's transformation to IrMnCr, visit the Hitachi website at www.hitachi.com/license2read.

Hitachi Global Storage Technologies trademarks are intended and authorized for use only in countries and jurisdictions in which Hitachi Global Storage Technologies has obtained the rights to use, market and advertise the brand. The Travelstar trademark is authorized for use in the Americas, EMEA, and the following Asia-Pacific countries and jurisdictions: Australia, Hong Kong, Japan, New Zealand, South Korea and Taiwan. Contact Hitachi Global Storage Technologies for additional information. Hitachi Global Storage Technologies shall not be liable to third parties for unauthorized use of this document or unauthorized use of its trademarks.

References in this publication to Hitachi Global Storage Technologies' products, programs or services do not imply that Hitachi Global Storage Technologies intends to make these available in all countries in which it operates.

Product specifications provided are sample specifications and do not constitute a warranty. Information is true as of the date of publication and is subject to change. Actual specifications for unique part numbers may vary. Please visit the Support section of our website, www.hitachigst.com/support, for additional information on product specifications. Photographs may show design models.

© 2007 Hitachi Global Storage Technologies

Hitachi Global Storage Technologies
3403 Yerba Buena Road
San Jose, CA 95135 USA

Produced in the United States 11/07.
All rights reserved.